

OPTICON Sensoren & OPAL Solutions:

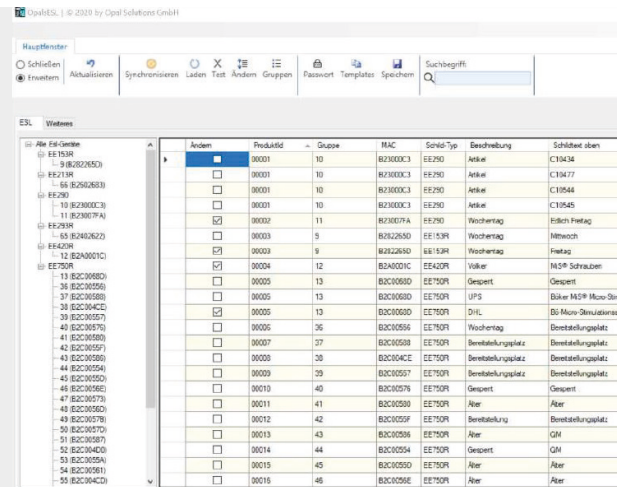
The perfect synergy of digital signage and user-friendly software



Introduction

Opal Solutions GmbH, based in Jülich, is an innovative hardware and software manufacturer supporting customers as a consultant when it comes to optimizing organizational processes as well as work processes based on automatic identification.

Opticon Sensors and Opal Solutions have been working together successfully on various cross-sector projects for a long time. Opal has created its own software for the wide range of Opticon ESL hardware, which can be quickly and easily adapted to different customer requirements.



The Situation

In the context of advancing digitization, a globally active customer is faced with the challenge of making his incoming goods processes easier, efficient, and more secure. Previously, employees had used place accompanying notes (paper slips) for labeling several times a day to display the contents of a storage place. On these signs are, for example the storage place number, the name of the carrier or the expiration date of the best-before date.

Whenever a change was made, the warehouse workers had to climb onto a step and attach the accompanying notes to a sign hanging from the ceiling. This workflow was time consuming as well as associated with potential health risks. The customer's wish was on the one hand to minimize physical risks and on the other hand further optimize and digitize the process.





The Solution

For the requirements of customers, the “OPALsESL-software” was developed for the Opticon ESLs, which can be customized.

With the software solution that has been created, employees can now carry out the labeling conveniently from their computer. The new workflow is significantly more use friendly, safer, more effective and avoids potential errors. It also increases the productivity of employees as they can now do more business-oriented activities instead of exchanging printed signs all day.

Opticon Products

Advantages of Opticon Electronic Shelf Labels:

- Significant time savings and changes to the sign content in seconds
- Central administration through the ESL software
- Professional process optimization of workflows
- Resource and environmentally friendly due to paperless workflows
- Long battery lifetime
- Flexible use in production processes, warehouse management and logistics



About Opticon

Opticon Sensoren is known for its pioneering work in the Auto-ID industry and since it was founded in 1976, it has developed into an international and versatile manufacturer of quality products in the areas of automatic identification and digital signage.

Since 1989 Opticon Sensoren GmbH is the German branch of Opticon Sensors Europe B.V. and with Opticon Inc. (USA) part of OPTOELECTRONICS Co., Ltd (Japan). Products and solutions from Opticon are valued in the market for their durability and can be individually programmed.

In addition to scan engines for integration into industrial applications, we also offer you pre-assembled Fixmount scanners for Vending machines and parking space management, as well as all common scan solutions for the retail and industrial sector:

- Mobile and cabled scanner
- Stationary scanner
- Companion scanner
- Wireless scanner
- Terminals (Windows and Android)

Opticon Sensoren is also known for its solutions in the field of digital signage and ESL (Electronic Shelf Labels). This includes the following products, among others:

- E-paper based displays
- TFTs in special formats
- Battery-free E-paper solutions
- As well as the corresponding infrastructure and software Thanks to our strong partner network around the globe, we will also find the right solution for you and are the point of contact for end customers, integration partners and system houses alike.

We scan, connect and communicate!

Follow us Online

 Facebook

 LinkedIn

 XING

 Twitter

 Instagram

 YouTube

www.opticon.com